

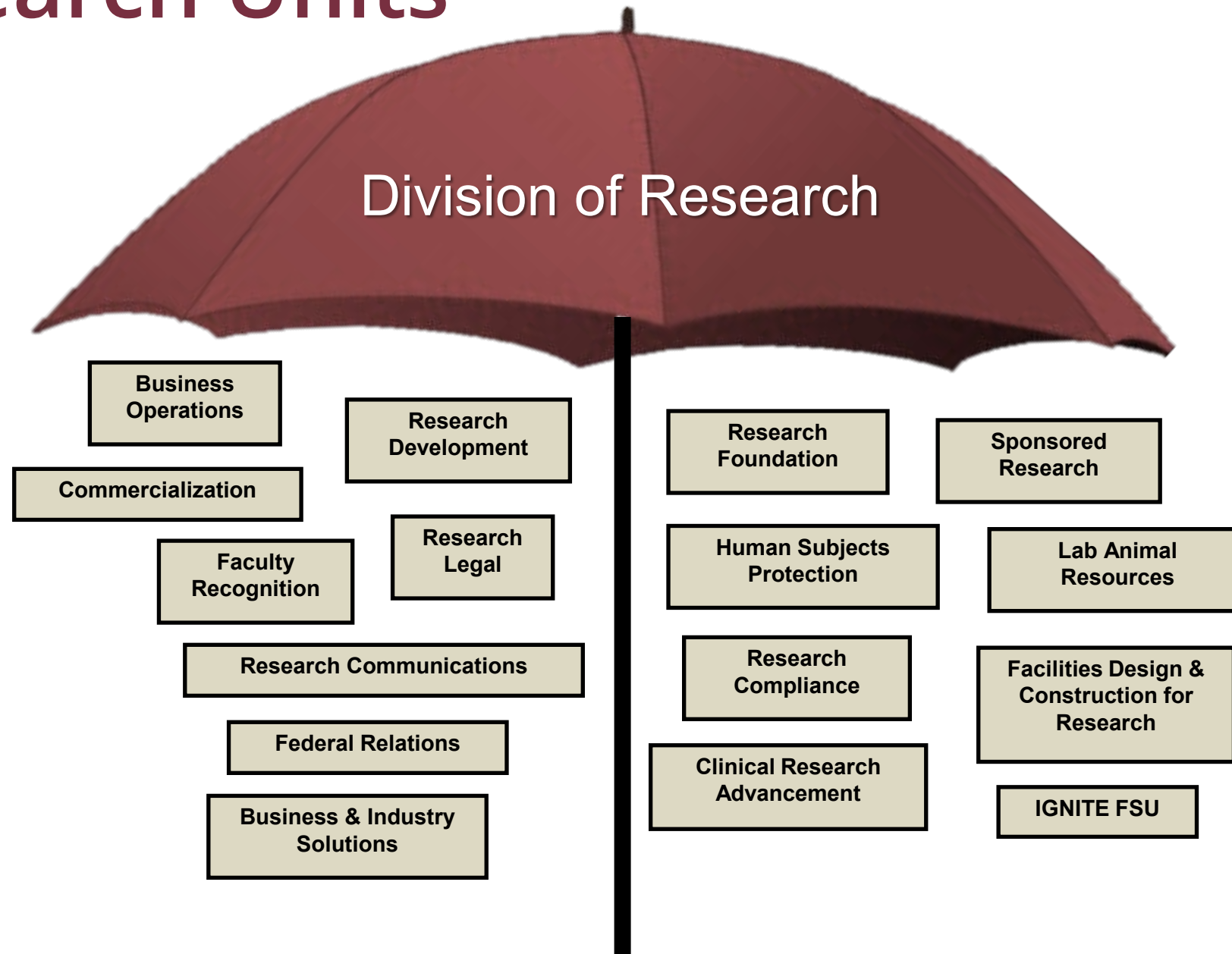


All About Research

First-year Assistant Professor Workshop

Fall 2024

Research Units



FSU

How do I get started?

There are services and resources to help you find funding and write competitive proposals



- Funding Identification
- Discipline-Specific Proposal Support
- Proposal Services (mock reviews)
- Internal Competitive Funding
- Team Development & Collaboration
- Limited Submissions
- Live Workshops & Events

RD Online Resources

- Finding Funding Resources
- Proposal Resources
- On-Demand Training
- Agency Specific Resources
- On Demand Training
- Examples of Successful Proposals



CONTACT RESEARCH DEVELOPMENT



ORD.FSU.EDU

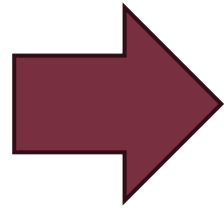


ORD@FSU.EDU

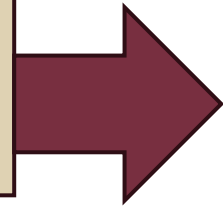


How do I prepare and submit a proposal?

Proposals are built by FSU Researchers with local support.



Proposals are entered into RAMP which routes them for all required approvals.



Proposals are reviewed and submitted to the sponsor by SRA or FSURF.

Research **A**dministration **M**anagement **P**ortal

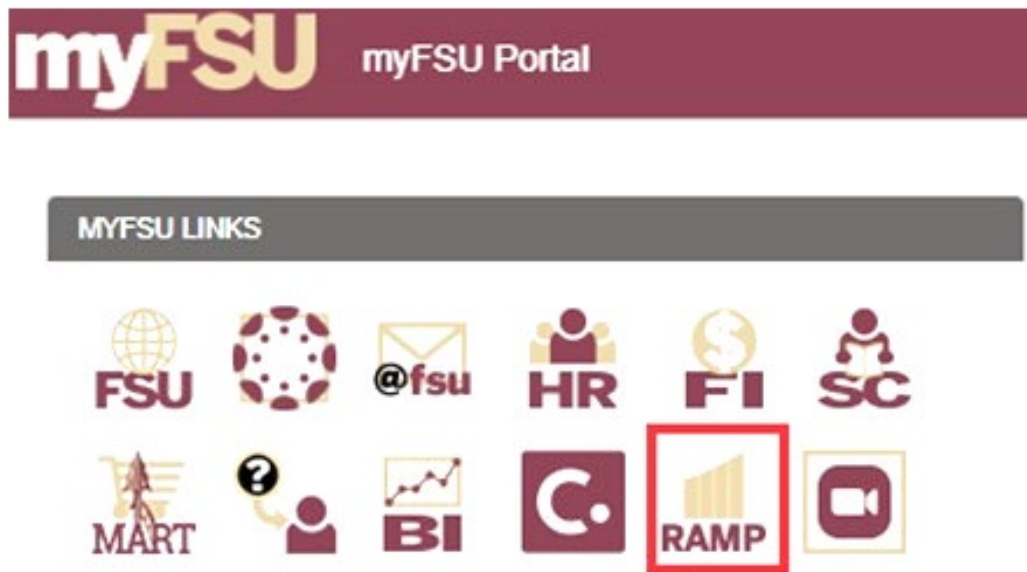
SRA (Sponsored Research Administration)
 FSURF (Florida State University Research Foundation).

Proposal Support

FSU has staff to support you

- For support in building your proposal and budget:
 - Contact your college, department, or Associate Dean for Research for guidance on local support.
- For questions related to publicly funded proposals (federal, state, local government, or pass-thru from any of these):
 - Contact SRA: <https://www.research.fsu.edu/research-offices/sra/staff-assignments/pre-award-staff-assignments/>
- For questions related to private funding (industry, foundation, etc.):
 - Contact FSURF: <https://www.research.fsu.edu/research-offices/fsu-research-foundation/>
- For questions on accessing and using RAMP:
 - Contact RAMP Support: RAMP-Grants@fsu.edu

All of the following can be accessed directly within RAMP:
ACUC, IRB, Grants (Proposals/PreAward), Agreements (Contracts), and Export Control.



RAMP opens to a Dashboard Page. From there, select the module from the top tabs.

To access RAMP, log into the **myFSU** portal and click on the RAMP icon

Make time to go through RAMP training:

RAMP Help Desk

- Grants: RSCH-RAMP-Grants@fsu.edu
- Export Controls: RSCH-RAMP-ExportControls@fsu.edu
- IRB: RSCH-RAMP-IRB@fsu.edu
- ACUC: RSCH-RAMP-ACUC@fsu.edu
- Agreements: RSCH-RAMP-Agreements@fsu.edu
- RAMP Support Director: **Dan Mullins**
dmullins2@fsu.edu



RAMP Training



**What if I have an
award to transfer?**

Award Transfers

(and any other questions regarding administration of sponsored projects)

FSU has staff to support you

- For publicly funded awards (federal, state, local government, or pass-thru from any of these):
 - Contact SRA: <https://www.research.fsu.edu/research-offices/sra/staff-assignments/pre-award-staff-assignments/>
- For privately funded awards (industry, foundation, etc.):
 - Contact FSURF: <https://www.research.fsu.edu/research-offices/fsu-research-foundation/>



Commercialization

Technology transfer is the process by which academia takes innovations and partners with industry or facilitates start-ups to further develop real-world products, services and applications.

Economic
Impact

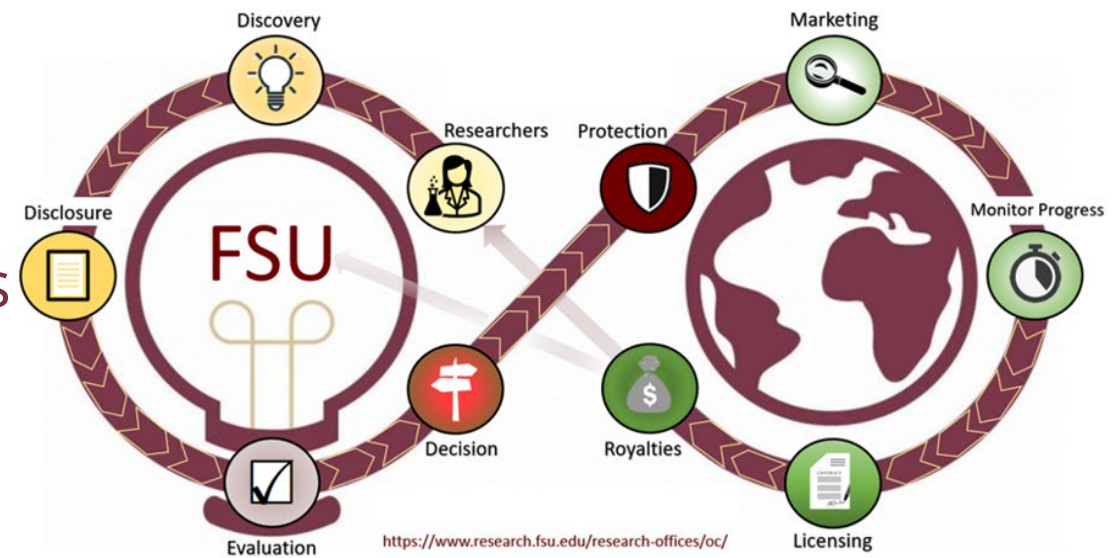
Knowledge
Sharing

Societal
Benefits

Commercialization

New ideas and Innovations? Commercialization wants to help you to get them to the market

- We will come to you!
- Evaluate for and provide intellectual property protection
- Identify and Market to potential partners
- Initiate Start-ups
- Negotiate and manage license agreements



CONTACT COMMERCIALIZATION

“The value of an idea lies in the using of it.”
-- Thomas Edison



Phone:

850.645.2143



Email: vmcdevitt@FSU.edu



Website:

<https://www.research.fsu.edu/research-offices/oc>

FSU

***IGNITE* FSU**

IGNITE FSU



Located in IGNITE Tallahassee technology incubator

- Support for early-stage technology startups and entrepreneurs
- Multi-use including wet, dry, and engineering lab space
- Shared equipment and facilities
- Regional support and collaboration: FAMU, TVCC, Office of Economic Vitality

CONTACT IGNITE FSU



Phone: (850) 644-1528



Email: acostabile@fsu.edu,
ignite-tallahassee@fsu.edu



Website:
<https://www.research.fsu.edu/ignite>



**How do I work with Private
Industry?**

Want to talk about working with Private Industry? Contact Mike

Contact:

Michael “Mike” Campbell

Chief Business and Industry Liaison

Office of Research

2000 Levy Avenue, Bldg A Rm323

mscampbell@fsu.edu

Cell: 850-545-7354

Office: 850-644-0106



FSU

How do I share my successes?

Research Communication & Publications

- Communicates and disseminates information about FSU research
- Contact us with story ideas, interesting findings, or questions
- **Kathleen Haughney -- khaughney@fsu.edu 850.644.1489**

FSU

Research Legal

How Can Legal Help?

- When you need a non-disclosure agreement (NDA), material transfer agreement (MTA), data use agreement (DUA), or other research-related agreement
- When you receive a **contract** from an academic or industry collaborator, vendor, or other outside entity
- <https://ramp.research.fsu.edu/modules/agreements/>



Phone: 850.644.8648



Questions: Angela Jackson
adjackson3@fsu.edu



Human Subjects Protection

Human Subjects Protection

- Protecting the rights, welfare, and well-being of human subject participants through the initial review and life-cycle oversight of research in accordance with applicable law and policy and to promote ethical research
- The IRB is a committee composed of scientists, laypersons, and community representatives who are charged by law to review human subjects research
- Human Subjects professional and administrative staff support the IRB, faculty, and staff through:
 - identifying IRB review pathways depending upon study scope, risks and applicable law
 - conducting pre-IRB review and other regulatory reviews (not requiring IRB review) of studies to streamline review processes and requirements, serving as a resource for investigators and regulatory subject matter experts for IRB members and the FSU research community
 - maintaining a database for submission and review of research
 - providing training regarding applicable law and FSU policies

When to Contact HSP

- Well in advance of commencing your research (not at the proposal stage)
- When there is a change in your plans
- When you have any human subjects-related questions

All human subjects research requires review and approval, including IRB review, prior to subject recruitment and data collection, and prior to the use of extant data or private information.

OHSP CONTACT INFORMATION



Address: 2010 Levy Avenue Suite 276 (SW Campus)



Phone: 580.644.7900



Email: humansubjects@fsu.edu



Website: <https://www.research.fsu.edu/research-offices/ohsp/>

FSU

Laboratory Animal Resources

LABORATORY ANIMAL RESOURCES

Centrally administered campus organization responsible for care of all vertebrate animals used in teaching and research at FSU

- Animal procurement
- Husbandry care
- Veterinary care and consultation
- Training

ANIMAL CARE AND USE COMMITTEE (ACUC)

Federally mandated entity with specific regulatory functions

- Conducts semiannual program and facility evaluations
- Reviews and investigates animal welfare concerns
- Makes recommendations regarding Program needs to Institutional Official
- Reviews and approves animal use protocols
- Authorized to suspend animal activity

LAR CONTACT INFORMATION



Address: 107 Chieftan Way, 101 Biomedical Research Facility



Phone: 644-4262



Email: wahill@fsu.edu
William Hill, Director



Website: lar.fsu.edu

FSU

Research Integrity, Security, and
Ethics (RISE)

Research Integrity, Security, and Ethics

- Ensures university compliance with federal, state, and local regulations regarding research.
- Develops and monitors research compliance program for FSU
- FSU's RISE encompasses all areas that support or relate to FSU's research and creative activities

When to Contact RISE

- To report potential issues not being addressed (anonymous hotline provided)
- For guidance with compliance issues in any area related to research, including but not limited to:
 - Conflicts of Interest
 - Contracts & Grants Management
 - Foreign Influence
 - Environmental Health and Safety
 - Export Controls
 - Human Subjects
 - Data Management
 - Responsible Conduct of Research
 - Animal Care and Use
 - Research Data Management & Security



- Florida State University uses the **Conflict Administration Management System (CAMS)** to report, approve, and manage **outside activity/employment**, as well as financial disclosures for employees at Florida State
- The system is also used to identify and manage conflicts of interest within research activities and has components that integrate with the RAMP Grants and RAMP IRB modules.
- Additional information and training materials may be found on the CAMS Training and Support website at: <https://cams-project.fsu.edu/>

Research Compliance Contact Information



Phone: 850.644-9947 (Mary Sechrist, PhD, Director)



Hotline: 855-231-7511 (24 hours a day, 365 days a year)



Email: m.sechrist@fsu.edu



Website: <https://www.research.fsu.edu/research-compliance/>

FSU

Clinical Research Advancement



OCRA

Office for Clinical Research Advancement

FSU's **central resource** for supporting faculty, students, and staff engaged in human subjects research:

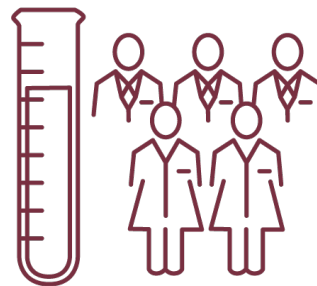
- includes **observational studies, clinical research, and clinical trials**
- helps in successful navigation of life cycle of study – from concept, planning, and design to implementation and analysis

Web: ocra.fsu.edu
Email: OCRA@fsu.edu

2000 Levy Ave., Suite 362
Tallahassee, FL 32306

OCRA provides:

- Research guidance & study development assistance
- IRB protocol consultation
- Biostatistical support
- Single point of contact for on- and off-campus resources, including clinical collaborators



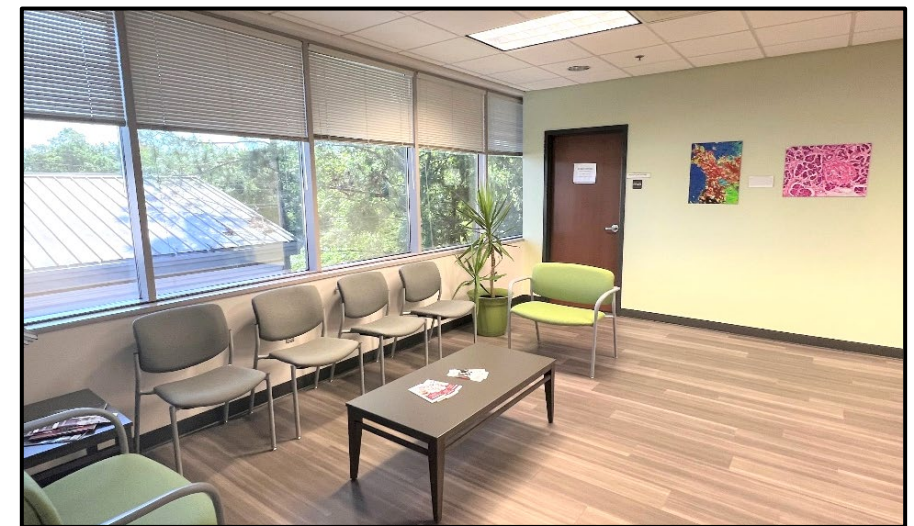
OCRA manages:

- ClinicalTrials.gov reporting for FSU studies
- ResearchMatch national study participant recruitment database for FSU researchers
- FSU Clinical Research and Trials Unit at Innovation Park
- FSU research collaboration process with Tallahassee Memorial HealthCare

Clinical Research and Trials Unit

Centralized location for multiple services with convenient access for study participants

- A 2,200 sq-ft, dedicated core facility for clinical research & trials
- Phlebotomy, specimen processing & freezer storage, interview and procedure rooms, supply storage & researcher workroom at Innovation Park
- An experienced RN clinical coordinator is available onsite



Research Training and resources for faculty and researchers

Some of the Available Resources

- **Research Administration Knowledge and Support Hub** – an online knowledge center, training information, and online forum
- **Research Administration Manual (RAM)** – an online research administration manual
- Online training, tools, and guides:
 - Self-paced faculty orientation to research at FSU
 - Researcher Pathway
 - Workflow Maps
 - Roles & Responsibilities
 - Access for policies & procedures
 - RAMP Information
 - Up2Speed – Education videos on research administration topics
 - Information regarding the Office of Research
 - Research Administration topics
 - Information on Finding Funding
 - And many other topics

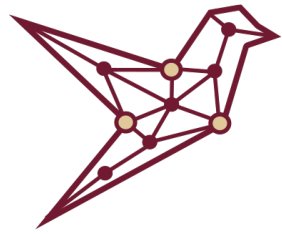


Faculty-Centered Training & References

- Researchers New to FSU – Online orientation on conducting research at FSU
- Research Development Resources
- High-Performance Computing Resources
- Human Subjects Research
- Office of Clinical Research Advancement
- And many other information and resources...

<https://hub.research.fsu.edu/learning-center/faculty-and-researcher-resources>

Other Research-Related Entities on Campus



BIRD

Biostatistics, Informatics,
and Research Design

The Biostatistics, Informatics, and Research Design (BIRD) Program is your resource for research design support and consulting services from health data experts.

The BIRD Program provides a central location to access support services related to human health data science, informatics, and clinical and translational research design including:

- Clinical and translational research design
- Biomedical informatics database access (e.g., OneFlorida Data Trust, i2b2)
- Informatics and data science support
- Quantitative data analysis
- Qualitative data analysis
- Access to support services for health data collection

We Make Your Data Soar!

For More Information:

<https://ctsa.research.fsu.edu/resources/bird/>

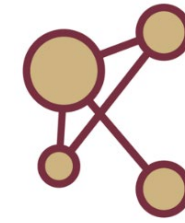


*Supported in part by the
UF-FSU Clinical and
Translational Science Award
(CTSA)*

**NEED ASSISTANCE?
CONTACT OUR TEAM!**

**FSU CTSA Service
Request Form**

First consultation is free! Let us help you design your studies and develop your grant applications!



NCRT-CE

Network for Clinical Research, Training,
and Community Engagement

The NCRT-CE provides all levels of investigators with a range of consultative services, resources, and guidance to assist with designing and implementing clinical and health research protocols.

The multidisciplinary backgrounds of the NCRT-CE team translate into diverse research expertise including public health, qualitative, clinical, and community-engaged research. Services Include:

- Study development
- Regulatory assistance
- Qualitative research methods
- Recruitment consultations
- Data management (e.g., REDCap, Qualtrics)
- Training for investigators and community members
- Community engagement

For More Information:


<https://ctsa.research.fsu.edu/resources/ncrt-ce/>

K2R Scholars Program at FSU

- Develop a community of K2R Scholars and mentors
- Establish mentoring teams
- Support initial K applications to NIH
 - Virtual and in-person workshops and boot camps
- Initiate competitive NIH-funded KL2 Scholars (2) and internally funded K2R Scholars (1)
- Provide ongoing professional development
 - Training courses (in-person and virtual)
 - Listserv and website: <https://ctsa.research.fsu.edu/services/k2rprogram/>

Shared Scientific Equipment Portal

<https://apps.its.fsu.edu/AssetManagement/>

FLORIDA STATE UNIVERSITY  ✉ 🔍 ☰

SCIENTIFIC EQUIPMENT

Search Scientific Equipment [View All](#) [Reset](#)

OR

Group: Any Facility: Any Department: Any

[Add Your Equipment](#)

Contact: **Thayumanasamy
Somasundamam "Soma"**
soma@sb.fsu.edu

Environmental Health and Safety

- Biological Safety, Chemical Safety, Lab Safety, Environmental issues /training
- 644-6895
- ehs@admin.fsu.edu

FSU Libraries

- Digital Research & Scholarship
- Academic Publishing
- Research Data Management
- Digital Humanities
- <https://www.lib.fsu.edu/drs>

Questions? ? ?